

Jefferson County Land & Water Conservation Committee Agenda
"Working Together to Protect & Enhance the Environment"

Jefferson County Courthouse
311 S Center Ave, Rm 202
Jefferson, WI 53549-1701

Wednesday, December 15, 2021 @ 8:30 am

Join Zoom Meeting - <https://zoom.us/j/94186699586>
Meeting ID: 941 8669 9586#
Dial by your location: +1 312 626 6799

Committee Members: Matt Foelker (Chair), Walt Christensen (Vice-Chair), Mike Kelly (Secretary), Dan Herbst (UWEX Member), John Kannard (UWEX Member), Kirsten Jurcek (FSA Rep), and Margaret Burlingham (PACE Rep)

1. Call to Order
2. Roll Call (Establish a Quorum)
3. Certification of Compliance with the Open Meetings Law
4. Review of the December Agenda
5. Approval of the November 17, 2021 Meeting Minutes
6. Public Comment (members of the public who wish to address the Committee on specific agenda items must register their request at this time)
7. Communications
 - Department of Agriculture, Trade & Consumer Protection (DATCP) December 2021 Report
8. Discussion on Natural Resources Conservation Service (NRCS) Report
9. Discussion on Departmental Updates
10. Discussion on Producer-Led Groups: Jefferson County Soil Builders & Rock River Regenerative Grazers
11. Discussion on Multi-Discharger Variance Program Plan
12. Discussion on Cover Crop & Pasture Establishment Program
13. Discussion on Recommendations for Possible Drainage Board Candidates
14. Discussion and Possible Action on Notices of Noncompliance - Farmland Preservation Program (FPP)
15. Discussion and Possible Action on Cancellation of Notices of Noncompliance - FPP
16. Discussion and Possible Action on Purchase of Agriculture Conservation Easement (PACE) Applications & Baseline Documentation
17. Review of the Monthly Financial Report (October)
18. Discussion on Items for the Next Agenda
 - Next Scheduled Meeting January 19, 2022 @ 8:30 am in Room 202
19. Adjournment

A quorum of any Jefferson County Committee, Board, Commission or other body, including the Jefferson County Board of Supervisors, may be present at this meeting.

Individuals requiring special accommodations for attendance at this meeting should contact the County Administrator 24 hours prior to the meeting at (920) 674-7101 so appropriate arrangements can be made.

Land & Water Conservation Committee Minutes

November 17, 2021

1. Call to Order:

The monthly meeting was called to order by Matt Foelker at 8:30 am. Committee members Matt Foelker (Chairperson), Walt Christensen (Vice-Chairperson), Dan Herbst (UWEX Member), and John Kannard (UWEX Member) were present. Also in attendance were Patricia Cicero, Director, Land & Water Conservation Department (LWCD); and Kim Liakopoulos, LWCD. Committee members Mike Kelly (Secretary), Kirsten Jurcek (FSA Rep), and Margaret Burlingham (PACE Rep) were not present.

- Others in Attendance: Anita Martin (via Zoom) and Dean Weichmann, Jefferson County Soil Builders.

2. Roll Call (Establish a Quorum):

A quorum was established.

3. Certification of Compliance with the Open Meetings Law:

It was determined that the committee was in compliance with the Open Meetings Law.

4. Review of the November Agenda:

The November agenda was reviewed by the committee members. No changes were proposed.

5. Approval of the October 20, 2021 Meeting Minutes:

Herbst made a motion to approve the October 20, 2021 meeting minutes as written, Kannard seconded. Motion passed 4/0.

6. Public Comment:

There were no comments.

7. Communications:

- Department of Agriculture, Trade & Consumer Protection November 2021 Report.

8. Natural Resources Conservation Service (NRCS) Report:

NRCS did not attend the meeting therefore a report was unavailable.

9. Discussion on Departmental Updates:

LWCD is working with Finance, Corporation Counsel, and the Drainage Board to discuss the Board's, meetings, budget, and collaboration with Jefferson County. Cover crop cost share program field visits are being performed by Joe Strupp and Josh Butteris. Gerry Kokkonen is taking drone footage of Jefferson County Parks for the Parks website and Facebook. Kokkonen is in the process of completing annual gravel pit inspections. Cicero & Marisa Ulman gave a presentation to the Lake Mills Town Board on previous & future work related to a stream that flows into Rock Lake.

10. Discussion and Possible Action on Memorandum of Understanding (MOU) with the Jefferson

County Soil Builders (JCSB): Herbst made a motion to enter into a MOU with the JCSB, Christensen seconded. Kannard made a motion to amend the MOU to include "Grant funds, where needed, can be used for LWCD administrative fees" under the heading Sharing of Grant Funds, Herbst seconded. Motion passed, with amendment, 4/0.

- 11. Discussion on Producer-Led Groups: Jefferson County Soil Builders & Rock River Regenerative Grazers:** Nothing new to report at this time.
- 12. Discussion and Possible Action on Multi-Discharger Variance Application:**
Herbst made a motion to submit the Multi-Discharger Variance application for 2022, Christensen seconded. Motion passed 4/0.
- 13. Discussion and Possible Action on Transfer of Bond Cost Share Funds to Green Lake, Marquette, and Door Counties:** Herbst made a motion to transfer (\$33,750) bond cost share funds to Green Lake (\$4,756), Marquette (\$12,200), and Door (\$16,794) counties, Kannard seconded. Motion passed 4/0.
- 14. Discussion and Possible Action on Notices of Noncompliance - Farmland Preservation Program (FPP):** Harvey Buske Trust, Barbara Frank, FS, LLC, Eugene & Betty Hasel Trust, Rodell Lea, Lein Acres, LLC, Richard & Marilyn Riedel Trust, Harvey Schave, Adeline Schwemmer Trust, Betty Strike RL Trust
Voluntary: Robert & Laura White Trust

Christensen made a motion to accept the notices, Herbst seconded. Motion passed 4/0.
- 15. Discussion and Possible Action on Cancellation of Notices of Noncompliance - FPP:**
There were no cancellations.
- 16. Discussion and Possible Action on Purchase of Agriculture Conservation Easement (PACE) Applications & Baseline Documentation:** American Farmland Trust and NRCS have yet to receive a contract for additional PACE funding. Kokkonen is working with a landowner that made a request to reapply for an easement. Kokkonen will submit the needed documents to NRCS.
- 17. Review of the Monthly Financial Report (September):**
The most recent statement of revenues and expenditures was distributed.
- 18. Discussion on Items for the Next Agenda:**
Possible agenda items include: Cover Crop & Pasture Establishment Cost Share Overview
- **Next Scheduled Meeting:** December 15, 2021 @ 8:30 in Room 202
- 19. Adjournment:**
Kannard made a motion to adjourn at 9:25 am, Herbst seconded. Motion passed 4/0.



DATCP REPORT
Bureau of Land and Water Resources
December 2021

Soil and Water Resources Management Grants

- SWRM Hint of the Month: No need to wait – send in reimbursement requests as they are ready!
- Final reimbursement requests for 2021 grant awards are due February 15, 2022.
- Extension requests for 2021 SWRM cost-share contracts are due to DATCP by December 31, 2021.

ATCP 50: Soil and Water Resource Management Program

- We are making plans to reach out to stakeholders over the next year to talk about issues related to the rule. Please visit our [website](#) for more information and to sign up to receive future email updates.

Land and Water Conservation Board-LWRM Plans

- The December 7, 2021 meeting of the Land and Water Conservation Board (LWCB) will be conducted over Microsoft Teams. Milwaukee, Waukesha, and Waushara Counties will be presenting their LWRM plan revisions for approval. To join the meeting remotely [click this link](#) or follow the instructions in the December meeting agenda which is available at lwcb.wi.gov.
- For updates on LWCB meetings and meeting links please subscribe to LWCB [govdelivery notices](#). Please contact zach.zopp@wisconsin.gov for questions regarding joining via Microsoft Teams.
- Counties that are working through the LWRM plan revision process during COVID-19 restrictions may have questions and concerns about the requirements that need to be met for plan approval. Contact Lisa.Trumble@wisconsin.gov to discuss possible options to completing your plan revisions.

Annual Reporting

- We will be sending out a link to the annual reporting questions in December. As usual, county responses to the questions will be due by March 15, 2022. Please consider sharing information about the work you completed in 2021. The report is best when we can share information (and photos!) about diverse types of conservation projects from across the state!

Farmland Preservation Program and Agricultural Enterprise Areas

- The 2022 AEA petition cycle is open and accepting new and AEA modification petitions until July 29, 2022. For information about the petition process, please visit [Petitioning for Agricultural Enterprise Area Designation](#).
- Any counties that are still working on FP Agreement applications and hoping to have them processed before the end of this calendar year are encouraged to submit as soon as possible!
- On Nov. 17th, DATCP and DOR co-hosted a Farmland Preservation Tax Credit Update for Tax Professionals. You can access a recording of the presentation [here](#).
- Counties with FP Participants that claim on schedule FC-A should submit a first copy of their DOR spreadsheet to DATCPWorkingLands@wisconsin.gov or Katy.Smith@wisconsin.gov by December 27th, 2021. Counties may submit updates as needed over the course of tax season.

Conservation Reserve Enhancement Program (CREP)

- Thank you for your patience as DATCP worked on the letters following up on this summer's easement monitoring visits. The letters for easements in compliance have been sent. We are now working on letters to landowners with easement violations or that require additional follow-up.

Agricultural Impact Statement (AIS) Program

- The Public Service Commission of Wisconsin (PSC), in coordination with the AIS Program and the DNR, has hired an Independent Environmental/Agricultural Monitor (IEM) to monitor construction of the Cardinal Hickory Creek Electric Transmission Line Project in Dane, Iowa and Grant Counties. Construction began November 2021, and the IEM is actively monitoring the project.
- The PSC has scheduled Public Hearings for the following projects the AIS Program has participated in:
 - Northern State Power Company's proposed Ashland-Ironwood Transmission Line Relocation Project in Ashland and Iron Counties on December 13, 2021 at 2pm and 6pm.
 - Visit the [PSC Event Calendar](#) for instructions to join the Hearing for Docket 4220-CE-183.
 - American Transmission Company's Howards Grove to Erdman Transmission Line Project in Sheboygan County on January 4, 2022 at 2pm and 6pm.
 - Visit the [PSC Event Calendar](#) for instructions to join the Hearing for Docket 137-CE-195.
- Contact zach.zopp@wisconsin.gov for questions regarding any active AIS statement or the AIS program.

Producer-led Watershed Protection Grants

- We are finalizing awards for 2022 currently. Once awards are determined, we will require all groups to respond to the Award Letter with appropriate names / titles of individuals who will be signing contracts on behalf of the groups, including fiscal representatives where appropriate. For those groups who do not receive the total requested, we will also need updated budgets to include in the contracts.

Multi-Discharger Variance Program Plan

Jefferson County receives funds from municipal and industrial point sources who have a variance from the Department of Natural Resources on the timing associated with meeting their phosphorus discharge limits.

Funds must be used in the same watershed (Upper or Lower Rock River) on conservation practices that reduce phosphorus discharges. Jefferson County LWCD selected cover crops and pasture establishment as the practices that would receive cost-sharing. Cover crop mentors are also being cost-shared to help ensure the success of the practice. Cover crops have many benefits: erosion control, adding fertility and organic matter to soil, improving soil tilth, increasing infiltration and aeration of the soil, and improving overall soil health. Establishing pastures on cropland is a way to provide cover on the land and assist grazers. Both practices will be effective in reducing phosphorus runoff from farm fields.

The Department of Natural Resources requires that the funds be used in the highest phosphorus loading areas. Therefore, smaller watersheds in the Upper and Lower Rock River Basins were ranked by the LWCD according to the phosphorus loading for each watershed based on DNR modelling. Please see the map.

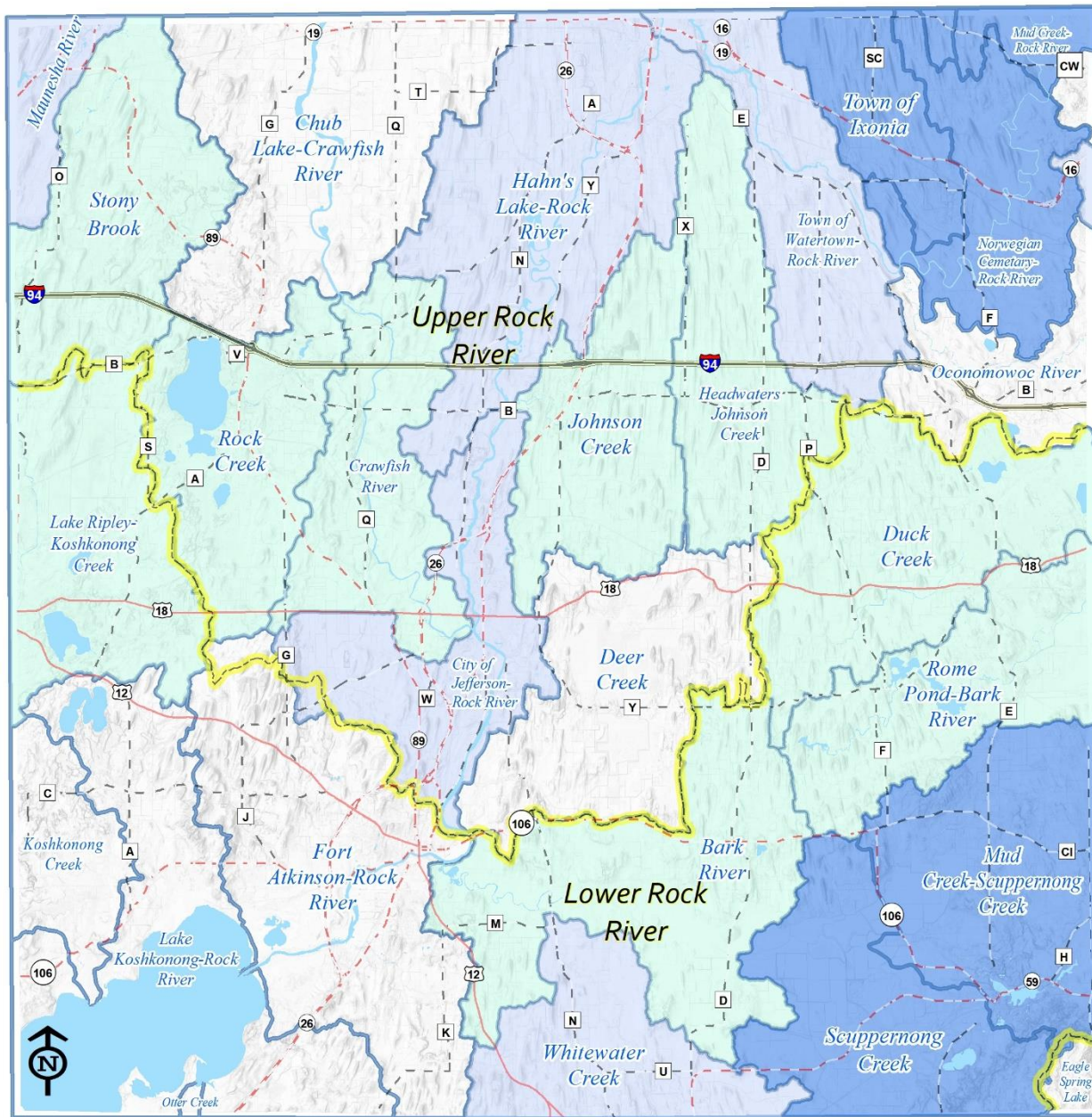
Applications for cost-sharing are ranked to make sure that the funds are spent on land that will result in the most likely reduction of phosphorus. Ranking criteria include:

- Prioritization of watershed (high to low, see map)
- Slope of land (steeper ranking higher)
- Distance to water (closer ranking higher)

Summary of Funds

	Upper Rock River		Lower Rock River	
	\$ Received	Application for \$	\$ Received	Application for \$
2020	\$11,129.20			
2021	\$18,586.75		\$2,190.27	
2022		\$13,829.13		\$25,405.56
Totals	\$29,715.95	\$13,829.13	\$2,190.27	\$25,405.56
Used in 2021	\$5,662.50		\$2,190	
Projected 2022 Funds	\$37,882.58*		\$25,405.83*	

*Funds requested for 2022 may decrease. Payments are received by March 1.



Jefferson County Watershed Prioritization for MDV Funding

Priority Ranking

- High
- Medium
- Low
- No Ranking
- Upper/Lower Rock River Watersheds



Map produced by Jefferson County Land & Water Conservation Department.
 Map sources: WIDNR Watershed Database;
 Jefferson County LIO
 Date: 12/9/2021

Cover Crop and Pasture Establishment Program - 2021 Review

A cover crop and pasture establishment cost-share program was established in 2021. The multi-discharger variance program funds are used to cover the costs of the program.

Cover Crop Cost-Sharing

- \$25 per acre of cover crops planted
- Maximum of 100 acres per year, per producer
- Maximum of four years (nonconsecutive)

Cover Crop Mentor Cost-Sharing

- Opportunity to work with a local and experienced cover crop mentor
- Mentors are approved by LWCD
- \$100 per visit
- 2 visits per contract

Pasture Establishment Cost-Sharing

- Convert land planted in row crops to pasture
- \$125 per acre
- 40 acre maximum per producer
- 40 acres can be split up over several contract years
- Pastures must be maintained for a minimum of 5 years

Contract Summary

- 9 cost-sharing contracts were signed for the cover crop program
- 8 cover crop contracts were implemented; 1 contract was not implemented, so no cost-sharing money was distributed
- 0 pasture establishment contracts this year

Marketing the Program

- Brochures available from the LWCD and the NRCS/FSA
- FPP newsletter
- Jefferson County Facebook page, Jefferson County Soil Builders Facebook page
- LWCD staff mentioning the program when meeting crop-growing farmers
- Word of mouth between farmers of the community
- LWCD staff have talked to many producers who are interested in funds for next year

Money received in 2020 and 2021

- Upper Rock River Basin = \$11,129.20 in 2020 + \$18,586.75 in 2021 = \$29,715.95 Total
- Lower Rock River Basin = \$2,190.27 in 2021 + \$500 donation in 2021 = \$2,690.27 Total
- Grand Total = \$32,406.22

2021 Contracts: All contacts for the 2021 season were for cover crop projects

Contract #	Watershed #1 / Acres	Watershed #2 / Acres	Total Acreage	# of Mentors	Total Cost-Shared (\$)
MDV-01-21	Scuppernong / 30 acres	-	30 acres	0	\$750.00
MDV-02-21	Crawfish River / 100 Acres	<i>Not Implemented, No Pay out</i>			
MDV-03-21	Lake Koshkonong / 6.7 acres	-	6.7 acres	0	\$167.50
MDV-04-21	Duck Creek / 62.9 acres	-	62.9 acres	2	\$1,772.50
MDV-05-21	Chub Lake-Crawfish / 100 acres	-	100 acres	0	\$2,500.00
MDV-06-21	Hahn's Lake-Rock River / 17.7 acres	Crawfish River / 27.3 acres	45 acres	0	\$1,125.00
MDV-07-21	Town of Watertown-Rock River / 42.5 acres	-	42.5 acres		\$1,062.50
MDV-08-21	Hahn's Lake-Rock River / 11.5 acres	Crawfish River / 1.1 acres	12.6 acres	2	\$515.00
MDV-09-21	Chub Lake-Crawfish / 18.4 acres	-	18.4 acres	0	\$460.00
Totals			318.1 acres	4	\$8,352.50

Upper Rock River Basin Breakdown – Cover Crop Program

Watershed	Total Acreage	Total \$ Cost-Shared for Cover Crops	Total \$ Cost-Shared for Mentorship	Total \$ Cost-Shared
Upper Rock Funds 2020-21				\$29,715.95
Chub Lake - Crawfish	118.4 acres	\$2,960.00	\$0	\$2,960.00
Town of Watertown - Rock River	42.5 acres	\$1,062.50	\$0	\$1,062.50
Hahn's Lake - Rock River	29.2 acres	\$730.00	\$182.54^	\$912.54
Crawfish River	28.4 acres	\$710.00	\$17.46^	\$727.46
Totals	218.5 acres	\$5,462.50	\$400.00	\$5,662.50
Total 20/21 Funds Remaining				\$24,053.45

^ Mentorship cost-sharing was under 1 contract, but fields were split in 2 different watersheds.

Lower Rock River Basin Breakdown – Cover Crop Program

Watershed	Total Acreage	Total \$ Cost-Shared for Cover Crops	Total \$ Cost-Shared for Mentorship	Total \$ Cost-Shared
Lower Rock Funds 2021				\$2,690.27
Duck Creek	62.9 acres	\$1,572.5	\$200.00	\$1,772.5
Scuppernong	30 acres	\$750.00	\$0	\$750.00
Lake Koshkonong	6.7 acres	\$167.50	\$0	\$167.50
Totals	99.6 acres	\$2,490	\$200.00	\$2,690.00
Total 2021 Funds Remaining				0.27

11/22/2021
09:16:40

Jefferson County
FLEXIBLE PERIOD REPORT

PAGE 1
gflfxrpt

FROM 2021 01 TO 2021 10

ACCOUNTS FOR:	ORIGINAL APPROP	TRANFRS/ ADJSTMTS	REVISED BUDGET	ACTUALS	ENCUMBRANCES	AVAILABLE BUDGET	PCT USED
100 General Fund							
<hr/>							
12401 Land Conservation							
12401 411100 General Property Taxes	-350,330	0	-350,330	-291,942.00	.00	-58,388.45	83.3%
12401 421001 State Aid	-164,693	0	-164,693	-163,393.02	.00	-1,299.98	99.2%
12401 432099 Other Permits	-150	0	-150	-50.00	.00	-100.00	33.3%
12401 451010 Sale Of Maps & Plat Books	-50	0	-50	.00	.00	-50.00	.0%
12401 451020 Other Fees	-310	0	-310	-32.50	.00	-277.50	10.5%
12401 451421 Crep Cancellation Fee	-100	0	-100	-300.07	.00	200.07	300.1%
12401 458001 Tree Sales	-8,000	0	-8,000	-7,791.10	.00	-208.90	97.4%
12401 458005 Ag & Horti Supply Revenue	-50	0	-50	-150.00	.00	100.00	300.0%
12401 458009 Livestock Siting App Review F	-2,200	0	-2,200	-750.00	.00	-1,450.00	34.1%
12401 458013 Farmland Cert Fee	-17,000	0	-17,000	-15,720.00	.00	-1,280.00	92.5%
12401 511110 Salary-Permanent Regular	81,302	0	81,302	69,517.92	.00	11,783.66	85.5%
12401 511210 Wages-Regular	289,837	0	289,837	254,769.48	.00	35,067.52	87.9%
12401 511330 Wages-Longevity Pay	904	0	904	216.56	.00	687.19	24.0%
12401 512141 Social Security	27,350	0	27,350	23,777.97	.00	3,572.03	86.9%
12401 512142 Retirement (Employer)	25,113	0	25,113	20,654.36	.00	4,458.64	82.2%
12401 512144 Health Insurance	64,122	0	64,122	45,573.93	.00	18,548.07	71.1%
12401 512145 Life Insurance	105	0	105	64.42	.00	40.58	61.4%
12401 512151 HSA Contribution	5,250	0	5,250	5,791.41	.00	-541.41	110.3%
12401 512173 Dental Insurance	5,448	0	5,448	4,064.17	.00	1,383.83	74.6%
12401 531100 Permits Purchased	0	0	0	30.75	.00	-30.75	.0%
12401 531301 Office Equipment	100	0	100	46.71	.00	53.29	46.7%
12401 531303 Computer Equipmt & Software	50	0	50	209.49	.00	-159.49	419.0%
12401 531311 Postage & Box Rent	1,200	0	1,200	918.09	.00	281.91	76.5%
12401 531312 Office Supplies	600	0	600	310.17	.00	289.83	51.7%
12401 531313 Printing & Duplicating	400	0	400	68.90	.00	331.10	17.2%
12401 531314 Small Items Of Equipment	250	0	250	122.26	.00	127.74	48.9%
12401 531324 Membership Dues	1,904	0	1,904	1,844.00	.00	60.00	96.8%
12401 531326 Advertising	0	0	0	175.00	.00	-175.00	.0%
12401 531341 Agricultural & Horti Suppli	4,500	0	4,500	4,948.31	.00	-448.31	110.0%
12401 531348 Educational Supplies	50	0	50	.00	.00	50.00	.0%
12401 531349 Other Operating Expenses	0	0	0	86.13	.00	-86.13	.0%
12401 531351 Gas/Diesel	1,200	0	1,200	1,096.68	.00	103.32	91.4%
12401 532325 Registration	860	0	860	600.76	.00	259.24	69.9%
12401 532332 Mileage	20	0	20	.00	.00	20.00	.0%
12401 532335 Meals	150	0	150	.00	.00	150.00	.0%
12401 532336 Lodging	725	0	725	.00	.00	725.00	.0%
12401 532339 Other Travel & Tolls	0	0	0	22.20	.00	-22.20	.0%
12401 533225 Telephone & Fax	200	0	200	250.85	.00	-50.85	125.4%

11/22/2021
09:16:41

Jefferson County
FLEXIBLE PERIOD REPORT

PAGE 2
gflxrpt

FROM 2021 01 TO 2021 10

ACCOUNTS FOR: 100 General Fund	ORIGINAL APPROP	TRANFRS/ ADJSTMTS	REVISED BUDGET	ACTUALS	ENCUMBRANCES	AVAILABLE BUDGET	PCT USED
12401 533236 Wireless Internet	1,100	0	1,100	831.10	.00	268.90	75.6%
12401 535242 Maintain Machinery & Equip	800	0	800	988.81	.00	-188.81	123.6%
12401 535259 Tree Planter Service	50	0	50	.00	.00	50.00	.0%
12401 535349 Other Supplies	80	0	80	.00	.00	80.00	.0%
12401 571004 IP Telephony Allocation	941	0	941	784.20	.00	156.80	83.3%
12401 571005 Duplicating Allocation	63	0	63	52.50	.00	10.50	83.3%
12401 571009 MIS PC Group Allocation	19,325	0	19,325	16,104.20	.00	3,220.80	83.3%
12401 571010 MIS Systems Grp Alloc(ISIS)	4,420	0	4,420	3,683.30	.00	736.70	83.3%
12401 591519 Other Insurance	4,465	0	4,465	3,715.84	.00	749.28	83.2%
<hr/> 12402 Wildlife Crop Damage							
12402 421001 State Aid	-20,000	0	-20,000	-12,453.78	.00	-7,546.22	62.3%
12402 529299 Purchase Care & Services	20,000	0	20,000	13,428.51	.00	6,571.49	67.1%
<hr/> 12404 Local Cost Share Program							
12404 421001 State Aid	-5,500	0	-5,500	-1,100.00	.00	-4,400.00	20.0%
12404 472337 24404 Municipal Grant Revenue	0	-31,906	-31,906	-20,777.02	.00	-11,129.18	65.1%
12404 485200 24404 Donations Restricted	0	0	0	-500.00	.00	500.00	.0%
12404 521219 Other Professional Serv	5,500	0	5,500	.00	.00	5,500.00	.0%
12404 521219 24404 Other Professional Serv	0	11,129	11,129	.00	.00	11,129.20	.0%
12404 529299 24404 Purchase Care & Service	0	20,777	20,777	2,752.50	.00	18,024.50	13.2%
<hr/> 12405 DATCP Cost Share							
12405 421003 State Aid GPR	-12,000	0	-12,000	-6,520.00	.00	-5,480.00	54.3%
12405 421004 State Aid Bonded	-33,750	0	-33,750	.00	.00	-33,750.00	.0%
12405 593701 Cost Share Payment	45,750	0	45,750	6,520.00	.00	39,230.00	14.3%
<hr/> 12406 Non-Metallic Mining							
12406 411100 General Property Taxes	10,825	0	10,825	9,020.80	.00	1,804.20	83.3%
12406 432004 Non-Metallic Permit Fee	0	0	0	-900.00	.00	900.00	.0%
12406 432005 Non-Metallic Annual Fee	-9,430	0	-9,430	-350.00	.00	-9,080.00	3.7%
12406 474175 Highway Billed	-2,035	0	-2,035	.00	.00	-2,035.00	.0%
12406 531311 Postage & Box Rent	60	0	60	35.11	.00	24.89	58.5%
12406 531312 Office Supplies	50	0	50	.00	.00	50.00	.0%

11/22/2021
09:16:41

Jefferson County
FLEXIBLE PERIOD REPORT

FROM 2021 01 TO 2021 10

ACCOUNTS FOR:	ORIGINAL APPROP	TRANFRS/ ADJSTMTS	REVISED BUDGET	ACTUALS	ENCUMBRANCES	AVAILABLE BUDGET	PCT USED
100 General Fund							
12406 531348 Educational Supplies	25	0	25	.00	.00	25.00	.0%
12406 531351 Gas/Diesel	50	0	50	10.00	.00	40.00	20.0%
12406 532325 Registration	100	0	100	.00	.00	100.00	.0%
12406 532335 Meals	25	0	25	.00	.00	25.00	.0%
12406 532336 Lodging	330	0	330	.00	.00	330.00	.0%
12407 Farmland Easement							
12407 458003 Farmland Easement Fee	0	0	0	-750.00	.00	750.00	.0%
12407 481001 Interest & Dividends	-3,000	0	-3,000	-84.13	.00	-2,915.87	2.8%
12407 521219 Other Professional Serv	0	0	0	3,000.00	.00	-3,000.00	.0%
12407 531311 Postage & Box Rent	25	0	25	12.53	.00	12.47	50.1%
12407 531312 Office Supplies	125	0	125	.00	.00	125.00	.0%
12407 531313 Printing & Duplicating	20	0	20	.00	.00	20.00	.0%
12407 594960 Capital Reserve	137,660	-1,903	135,757	.00	.00	135,756.69	.0%
12407 699800 Resv Applied Capital	-134,830	1,903	-132,927	.00	.00	-132,926.69	.0%
12408 County Farm							
12408 411100 General Property Taxes	97,351	0	97,351	81,125.80	.00	16,225.12	83.3%
12408 482003 County Farm Land Rent	-100,427	0	-100,427	-100,426.50	.00	-.50	100.0%
12408 529170 Grounds Keeping Charges	1,076	0	1,076	1,096.73	.00	-20.65	101.9%
12408 535249 Sundry Repair	2,000	0	2,000	22,137.51	.00	-20,137.51	%

11/22/2021
09:16:41

Jefferson County
FLEXIBLE PERIOD REPORT

FROM 2021 01 TO 2021 10

	ORIGINAL APPROP	TRANFRS/ ADJSTMTS	REVISED BUDGET	ACTUALS	ENCUMBRANCES	AVAILABLE BUDGET	PCT USED
GRAND TOTAL	0	0	0	-23,530.16	.00	23,530.16	.0%